

2024

Allianz Donna Walker Awards

Promoting Diversity and Inclusion

ANZIIF introduced the Donna Walker Awards in 2021 to shine a light on individuals who have contributed significantly to the development of insurance professionalism and promoting diversity and inclusion throughout the industry.

The award will recognise excellence in two categories: Inspiring Leadership and Emerging Talent.

These awards are in memory of Donna Walker

Donna was a much loved and respected member of the Insurance Community. She championed and supported diversity within the insurance industry and was an admired professional and respected leader, who displayed warmth, genuine care and dedication in her professional and personal life.

Donna was appointed to the ANZIIF Board in March 2017 and was a friend of ANZIIF for many years.

Criteria

The Award will recognise one professional in each category, who has demonstrated outstanding professionalism, commitment, achievement and passion in the insurance industry.

You may nominate a colleague/peer or self-nominate.

Entries are open to everyone working in the insurance industry, regardless of sector or personal identification.

Entries MUST be 1,500 words or less.

Allianz Donna Walker Award For Inspiring Leadership

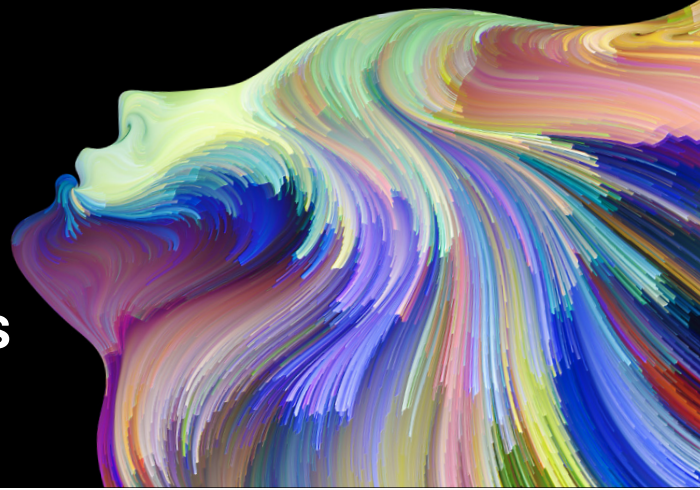
Entries must provide the following:

A brief career synopsis. Include the age at which you first joined the industry, what attracted you to it and briefly outline the roles you have held.	Worth 10%
What are you currently doing to promote diversity and inclusion in the insurance industry? What have the results of your efforts been?	Worth 40%
An example of where you have been a mentor in the industry and what positive impact this work has had on the individual or group.	Worth 50%

Allianz Donna Walker Award For Emerging Talent

For entries to be accepted, the individual must have been in the industry for less than 5 years in a non-executive role. Entries must provide the following:

A brief career synopsis. Include the age at which you first joined the industry, what attracted you to it and outline the roles you have held.	Worth 10%
An example of where you have promoted the insurance industry outside of your business-as-usual work.	Worth 40%
What you are doing to invest in your professional development and the outcomes of your commitment to learning have been.	Worth 50%



2024 Allianz Donna Walker Awards Promoting Diversity and Inclusion

Tips and Guidelines

The following tips and guidelines provide an insight into the judging process and will assist you in creating your entry.

1. The Judging process

The Judges are well-respected, senior insurance professionals selected from across the industry and volunteer their time to participate in the judging process. Judges are bound by confidentiality agreements and recuse themselves when a potential conflict arises. At no time are Judges who have identified a conflict allowed to read or deliberate on an entry.

There are two parts to the judging process.

Round 1 – Entries will be reviewed to ensure they have adhered to the word limit and address all criteria.

Round 2 – Each Judge independently reviews and marks the entries that pass round 1. The Judges then submit their marking sheets and scores to ANZIIF, which are collated and used to establish the winner.

Note: As the sole sponsor for the Donna Walker Awards, Allianz have agreed that current employees of Allianz will not be eligible for the Donna Walker Awards.

Sponsorship management and judging are separate processes. Each entry is assessed on merit against the judging criteria.

2. Keeping to the word limit

Entries are required to meet the specific word limit. Entries exceeding the word limit by more than 10 per cent will not reach Round 2 for the Judges to review.

Pay attention to the weighting of each question, as this will help you to decide where to focus your efforts.

3. Addressing the criteria

If you do not fully answer a criterion, you will receive low marks, reducing your entry's chance of winning.

Judges only base their decisions on the information you provide in your entry, so make sure that you answer each part of each question thoroughly. Check the weighting of different criteria to determine which questions require the most effort.

Entries failing to address any of the criteria will automatically be disqualified and not sent to the Judges.

Avoid making vague or unsupported claims. Entries should include data and evidence as doing so ensures credibility and believability.

There is no need to be concerned about the confidentiality of information when providing evidence to support an entry. All Judges sign confidentiality agreements and are excluded from reviewing or participating when they may have a conflict of interest.

4. Submitting

Documents should be submitted as a word document or PDF. They should not exceed 50MB.

5. Help and further information

If you're in doubt or need help, give ANZIIF a call. The team are well versed in the criteria and can answer any questions about the criteria or the process. Asking us may help you to improve your entry. **Please feel free to contact ANZIIF Events on 03 9613 7200 or via email [ANZIIF Events@anziif.com](mailto:ANZIIF_Events@anziif.com)**