



ANZIIF LIABILITY CONFERENCE

Wednesday 28 July – Thursday 29 July 2021

Virtual Conference | Online

anziif.com/liability



PLATINUM SPONSOR



GOLD SPONSORS



SILVER SPONSORS



ATTENDEE HUB SPONSOR



Duck Creek
Technologies

VIRTUAL SATCHEL SPONSOR



AU NETWORKING DRINKS SPONSOR



NZ NETWORKING DRINKS SPONSOR



LIABILITY VIRTUAL CONFERENCE

Each year, the ANZIIF Liability Conference offers valuable knowledge, fresh insights and access to leaders in the insurance profession. Returning in 2021, ANZIIF has adapted this flagship event for the virtual landscape.

As a virtual conference, this event provides the ideal forum for insurance professionals in Australia and New Zealand to discuss the issues that are relevant now and in the future. It removes any barriers that may have traditionally impeded attendance and provides an invaluable professional development opportunity and an accessible way for attendees to stay up to date with developments in the industry.

This year's event includes topical, relevant and thought-provoking presentations, which will explore the latest trends, findings and developments in liability insurance, and provide insights into what the future might hold, in addition to networking opportunities.

WHY ATTEND THE LIABILITY VIRTUAL CONFERENCE?

- Expand your knowledge and invest in your professional development. Hear from experienced industry leaders and obtain 5.5 CIP points
- Learn beyond your field or interest with the added flexibility of choosing sessions most relevant to you
- Join virtually with ease across two days without impacting your day
- Engage asynchronously through on demand presentations and interactive event portal
- The opportunity to build your professional network and connect with like-minded people and industry peers at the networking drinks.

WHO SHOULD ATTEND?

The Liability Virtual Conference is essential for all:

- Insurers
- Insurance brokers and agents
- Liability professionals
- Claims professionals
- Risk managers
- Loss Adjusters
- Insurance lawyers
- Reinsurers
- Government leaders

DETAILS



DATE: Wednesday 28th July – Thursday 29th July 2021



VENUE: Online



TIME: 11:00am – 2:30pm (AU) | 1:00pm – 4:30pm (NZ)

** Please visit [Time and Date](#) to establish the start time in your local time zone.*



CIP POINTS: 5.5



NETWORKING DRINKS: In Person

ANZIIF will also host two complimentary networking functions to provide attendees with that much needed face-to-face interaction with their colleagues and peers. Please note, these will be held in Sydney and Auckland the week following the conference. An invitation will be sent to all registered attendees closer to the event.

REGISTRATION

All pricing includes GST.

	AU	NZ
Early Bird Member	\$430.00	\$464.40
Early Bird Non-Member	\$540.00	\$583.20
Member	\$480.00	\$518.40
Non-Member / Individual Ticket	\$600.00	\$648.00
Group Booking	\$430.00	\$464.40

*Group booking and ANZIIF member discounts available.
This professional development event will sell-out quickly.*

Register now at anziif.com/liability

LEARNING OUTCOMES

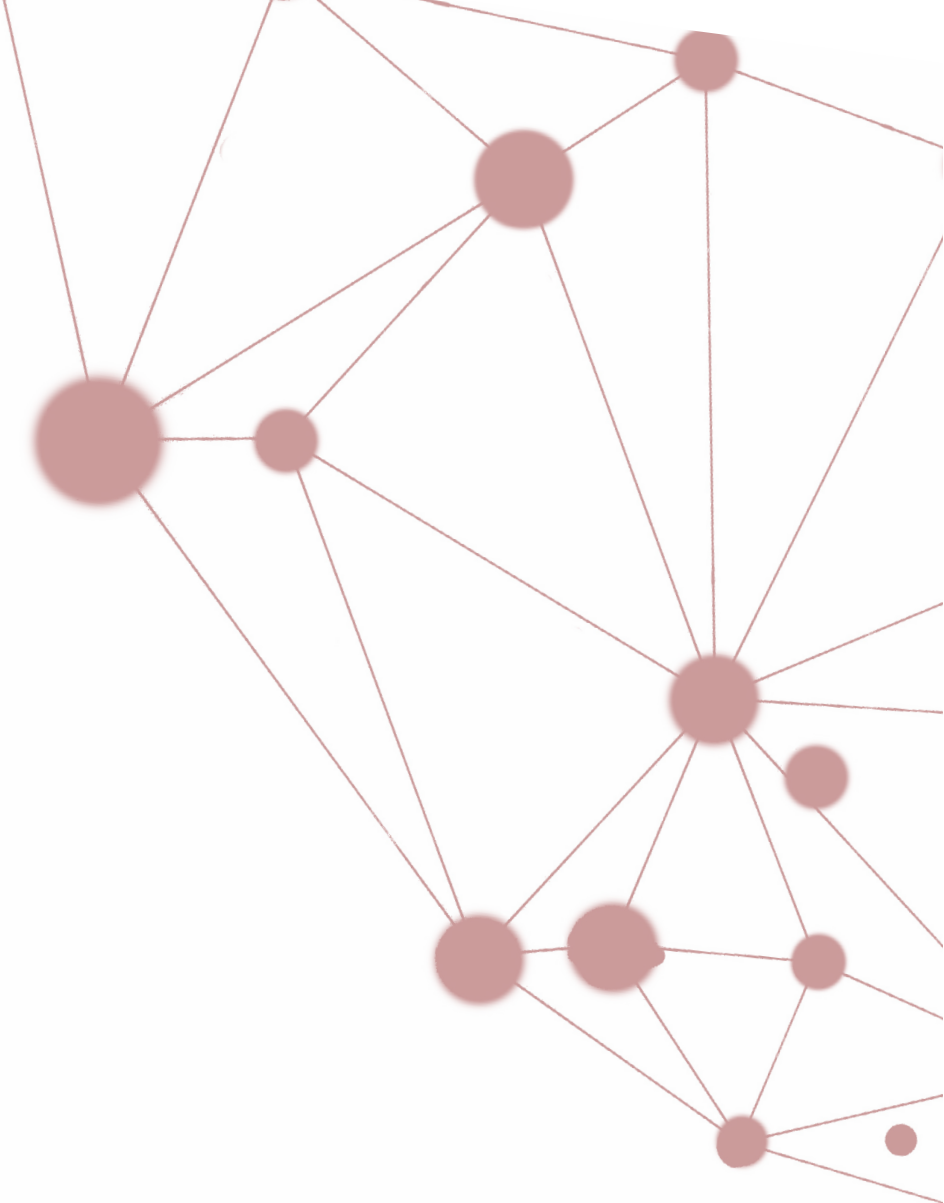
By the end of the conference, attendees will be able to:

- Describe why climate litigation is on the rise, how it may develop in the future, and how it can impact the entire supply chain for all goods and services
- Understand which market segments are most affected in the current climate of hardening rates and why
- Identify how loss trends, regulation, litigation funding and investigations/inquiries are driving increased prospective pricing
- Understand the relevance of class actions and litigation funding in the insurance market
- Recognise the number of factors that could impact profitability and distinguish why liability insurance rates continue to rise
- Discuss why liability, statutory liability, D&O, and A&E rates are hardening
- Explain recent legal authorities on aggregation
- Discuss insights and learnings from recent legal cases in Australia, New Zealand and the United Kingdom.

ACKNOWLEDGEMENTS

ANZIIF gratefully acknowledges the generous assistance and support of the 2021 Liability Conference Organising Committee:

- **Neil Beadle** — *Special Counsel, DLA Piper*
- **Jake Clapham** — *Placement Manager – Liability, Aon*
- **Robert Crittenden** — *Principal, Meridian Lawyers*
- **Brodie English** — *Senior Underwriter, AXA XL*
- **Eren Giriftin** — *Senior Claims Specialist – Liability, Allianz*
- **Eoin Lawless** — *E S Lawless Ltd*
- **Wendy Liiv** — *Group Insurance Manager, Commonwealth Bank*
- **Aimee Mackey** — *Lawyer, Morgan Coakle*
- **Monica Maharaj** — *Regional Claims Manager – Liability, NZI*
- **Nick Murphy** — *Casualty Manager, General Reinsurance – Property & Casualty*
- **Aaron Sherriff** — *Partner, Duncan Cotterill*
- **Jon Stagg** — *Chartered Loss Adjuster – Liability Services, McLarens*
- **Natalie Storer** — *Claims Manager, HDI Global SE, Australia*



PROGRAM OVERVIEW

DAY 1

Session 1:	11:30am – 12:10pm (AEST) / 1:30 – 2:10pm (NZST)	Climate change and the emergence of ESG
Session 2:	12:10pm – 12:50pm (AEST) / 2:10 – 2:50pm (NZST)	The Liability market – Hard and not so fast and Hard knock lines
Session 3:	1:05pm – 1:45pm (AEST) / 3:05pm – 3:45pm (NZST)	Class Actions and Funders: The Trans-Tasman landscape and beyond the horizon
Session 4:	1:45pm – 2:25pm (AEST) / 3:45pm – 4:25pm (NZST)	Legal update insights and aggregation – Recent developments

DAY 2 AUSTRALIA

Times listed are in AEST

Session 1:	11:30am – 11:45am	KEYNOTE PRESENTATION: Changing landscapes – What your future self is hoping you do today
Session 2:	11:45am – 12:20pm	Construction liability – Constructing a profitable segment
Session 3:	12:20pm – 12:50pm	Defective building products & recent liability cases
Session 4:	1:05pm – 2:05pm	PANEL DISCUSSION: Concussion & CTE – The current state of play
Session 5:	2:05pm – 2:25pm	Two decades after the ‘death of fun’ – Are we heading for another crisis?

DAY 2 NEW ZEALAND

Times listed are in NZST

Session 1:	1:30pm – 2:10pm	KEYNOTE PRESENTATION: An insider’s view on COVID
Session 2:	2:10pm – 2:50pm	Winter is coming
Session 3:	3:05pm – 3:45pm	Mediation of liability claims – Getting the most from the process
Session 4:	3:45pm – 4:25pm	Reform of natural resource management law in New Zealand: Liability implications

**WEDNESDAY 28TH JULY****DAY 1 — AUSTRALIAN AND NEW ZEALAND - PLENARY SESSIONS**THE TIME LISTED FOR
AUSTRALIA IS IN AEST AND
NEW ZEALAND IS IN NZST

11:00 am – 11:20 am (AU) 1:00 pm – 1:20 pm (NZ)	Registration
11:20 am – 11:30am (AU) 1:20 pm – 1:30 pm (NZ)	Conference Opening & ANZIIF Welcome: Glen Phillpotts , <i>Operations Manager – New Zealand, ANZIIF</i> MC Welcome: Adam Baker , <i>Executive Director – Broking, Willis Re</i>
11:30 am – 12:10 pm (AU) 1:30 pm – 2:10 pm (NZ)	Climate change and the emergence of ESG Johanna Kennerley , <i>Partner, Carter Newell Lawyers</i> Climate change has the ability to impact the entire supply chain for all goods and services. Find out about the risks associated with climate change, climate change litigation and the emergence of a corporate focus on 'Environmental, Social and Governance' policies in Australia and New Zealand. Learn through Johanna as she explores why climate litigation is on the rise and why ESG is trending as a significant corporate issue for all listed and non-listed clients.
12:10 pm – 12:50 pm (AU) 2:10 pm – 2:50 pm (NZ)	The liability market – Hard and not so fast Willem van Wyk , <i>Regional Market Manager ASEAN and Australasia, HDI Global SE</i> The liability market in the Pacific is at an interesting crossroad. We have seen a recent hardening of rates with no indication of this trend abating, which may be symptomatic of the market being 'too soft for too long'. Join Willem as he explores why liability insurance rates continue to rise, the outlook for insurers, and the number of factors that could impact profitability. Hard knock lines Joseph Hershowe , <i>Claims Manager, Executive & Professional Lines, Berkshire Hathaway Specialty Insurance</i> Across ANZ a combination of market, legal, and industry factors have created an increased climate of hardening rates. In a follow-on presentation, Joseph will delve into premium pools in certain classes and the similarities and differences in claims and underwriting experience across Australia and New Zealand. In this session, Joseph will detail the external and internal factors, including changing litigation environment, increased regulation, coverage changes, capacity withdrawal, rate changes, self-insurance, and evolving corporate environments and culture.
12:50 pm – 1:05 pm (AU) 2:50 pm – 3:05 pm (NZ)	Break
1:05 pm – 1:45 pm (AU) 3:05 pm – 3:45 pm (NZ)	Class actions and funders: The Trans-Tasman landscape and beyond the horizon Tricia Hobson , <i>Partner - Sydney & London, DLA Piper</i> Alicia Murray , <i>Partner - Auckland, DLA Piper</i> It's important to understand the relevance of both class actions and litigation funding in the insurance market, particularly in relation to claims. This presentation will provide a comprehensive overview of the class actions and litigation funding landscape in both Australia and New Zealand. Join Tricia and Alicia as they discuss recent significant cases in both jurisdictions, recent and potential regulatory reform, and explore what is on the horizon.
1:45 pm – 2:25 pm (AU) 3:45 pm – 4:25 pm (NZ)	Legal update insights and aggregation – Recent developments Prof Rob Merkin QC , <i>Special Counsel, Duncan Cotterill and Professor of Law, Universities of Reading and Exeter, UK</i> Are you familiar with the recent authorities on aggregation? Hear from Rob as he discusses the use of aggregation clauses in insurance and reinsurance contracts, focusing on the functions of such clauses, the meaning of standard wordings and the application of aggregation provisions in the financial services sector. Rob will also provide insights on recent cases across Australia, New Zealand and the United Kingdom.
2:25 pm – 2:30 pm (AU) 4:25 pm – 4:30 pm (NZ)	Day 1 Wrap-Up



THURSDAY 29TH JULY DAY 2 - AUSTRALIAN STREAM



THE TIME LISTED FOR
AUSTRALIA IS IN AEST AND
NEW ZEALAND IS IN NZST



THURSDAY 29TH JULY DAY 2 - NEW ZEALAND STREAM



THE TIME LISTED FOR
AUSTRALIA IS IN AEST AND
NEW ZEALAND IS IN NZST

11:00 am – 11:20 am (AU) 1:00 pm – 1:20 pm (NZ)	Registration		
11:20 am – 11:30am (AU) 1:20 pm – 1:30 pm (NZ)	MC Welcome: Adam Baker , <i>Executive Director – Broking, Willis Re</i>	11:20 am – 11:30am (AU) 1:20 pm – 1:30 pm (NZ)	MC Welcome: Sophie Hudson , <i>Senior Associate, DLA Piper</i>
11:30 am – 11:45 am (AU) 1:30 pm – 1:45 pm (NZ)	KEYNOTE PRESENTATION: Changing landscapes – What your future self is hoping you do today Noel MacCarthy , <i>Senior Vice President – Casualty, Asia Pacific – Liberty Specialty Markets</i> <p>Unsure what your P&L needs to show to be able to hit an acceptable ROE? As risks continue to increase, there's still the requirement to maintain an acceptable ROE to be viable.</p> <p>In this session, Noel will briefly address the pressure points in the industry for the next 10 years and explain how to look forward and be ready. Hear from Noel as he discusses the responsibility the industry has to provide efficient and effective risk transfer at a reasonable price.</p>	11:30 am – 12:10 pm (AU) 1:30 pm – 2:10 pm (NZ)	KEYNOTE PRESENTATION: An insider's view on COVID Siouxsie Wiles , <i>Microbiologist & Communicator, MNZM and Associate Professor, The University of Auckland</i> <p>Hear from headline speaker, Siouxsie Wiles, who will discuss the science behind the pandemic, its management, and what might be next.</p>
11:45 am – 12:20 pm (AU) 1:45 pm – 2:20 pm (NZ)	Construction liability - Constructing a profitable segment Daniel Hingston , <i>Assistant Vice President – Casualty, Liberty Specialty Markets</i> <p>Want to understand what the long tail experience and effects on construction industry segment results are? Eager to learn more about the challenges in profitably underwriting construction risks?</p> <p>Join Dan for an insightful discussion on the challenges and opportunities facing the construction segment experiencing reduced profitability, rising claims costs, new risks and a changing legal landscape.</p>		
12:20 pm – 12:50 pm (AU) 2:20 pm – 2:50 pm (NZ)	Defective building products - How do they affect us? Nick Murphy , <i>Casualty Manager, General Reinsurance – Property & Casualty</i> <p>Defective building products continue to impact the liability industry in many ways. Get up to date on the most troublesome defective building products. Listen to Nick as he describes their effect on the community, the legal issues arising and how liability insurance may respond.</p>	12:10 pm – 12:50 pm (AU) 2:10 pm – 2:50 pm (NZ)	Winter is coming Amanda Halfacree , <i>Deputy Head of Financial & Professional Risks, Crombie Lockwood</i> Martin Stroud , <i>Underwriting Manager Casualty and Financial Lines, NZI</i> <p>Over the last few years claims quantum have increased due to the combination of increased defence and indemnity amounts. New Zealand is slowly following trends in other jurisdictions and becoming more litigious, which is resulting in reduced capacity and a hardening market in some sectors.</p> <p>Legislation has increased both fines and penalties and courts have issued some significant judgements which have impacted the D&O market specifically.</p> <p>Join Amanda and Martin as they explore why there are more claims than ever, why they're costing more to settle, as well as the increasing rates and reduced capacity that has occurred as a result.</p>
12:50 pm – 1:05 pm (AU) 2:50 pm – 3:05 pm (NZ)	Break		

continued next page



THURSDAY 29TH JULY DAY 2 - AUSTRALIAN STREAM



THE TIME LISTED FOR
AUSTRALIA IS IN AEST AND
NEW ZEALAND IS IN NZST



THURSDAY 29TH JULY DAY 2 - NEW ZEALAND STREAM



THE TIME LISTED FOR
AUSTRALIA IS IN AEST AND
NEW ZEALAND IS IN NZST

1:05 pm – 2:05 pm (AU)
3:05 pm – 4:05 pm (NZ)

PANEL DISCUSSION: Concussion & CTE – The current state of play *Understanding the legal, medical and insurance implications of this emerging liability risk*

MODERATOR:

William Robinson, *Partner – Wotton & Kearney Perth*

PANEL:

Lachlan Gyles, *Senior Counsel, Selborne Chambers*

Dr Peter Brukner, *Sport and Exercise Medicine Physician and Professor of Sports Medicine, La Trobe University*

Will MacArthur, *Manager, Innovation (Gow-Gates Group)*

Concussion in sport, at both a professional and grass roots level, is considered a current and emerging risk. If you are part of an insurance brokerage, underwriter or claims handler (or just someone interested in this topical area) then we encourage you to attend what will no doubt be an insightful discussion.

The panel will discuss:

- the legal/liability issues associated with concussion and the current state of the medical science in this area
- the insurance response to the emerging risk of concussion
- what insurers and brokers are doing to assist insureds in sporting and other contexts to mitigate the risks of the issue to their organisations.

1:05 pm – 1:45 pm (AU)
3:05 pm – 3:45 pm (NZ)

Mediation of Liability Claims – Getting the most from the process

Mark Kelly, *Barrister & Commercial Mediator, Bankside Chambers*

Jonathan Scragg, *Partner, Duncan Cotterill*

Mediation is a key part of the liability claims resolution toolkit and many liability claims are mediated. Want to learn about getting the most from the mediation process?

Listen to Jonathan and Mark as they discuss mediation timing, preparation, engagement, and roles including when to mediate, how to approach a mediation and mediating online – a more common option in COVID times.

2:05 pm – 2:25 pm (AU)
4:05 pm – 4:25 pm (NZ)

Two decades after the ‘death of fun’ – Are we heading for another crisis?

Estelle Pearson, *Director, Finity Consulting*

Following the liability crisis of the early 2000s, Australia saw nationwide reform of civil liability and a significant improvement to insurance results for liability. Two decades on, have we finally reached the end of the liability ‘golden era’.

Join Estelle as she explains the trends in liability claims and insurer profitability, how premiums for some customers are now increasing significantly and the availability issues as the market hardens. Could we be heading for another crisis?

1:45 pm – 2:25 pm (AU)
3:45 – 4:25pm (NZ)

Reform of natural resource management law in New Zealand: Liability implications

Stuart Ryan, *Barrister, Akarana Chambers*

What resource management law reforms are being proposed in New Zealand?

Hear from senior environmental barrister, Stuart who will discuss current environmental law sentencing and enforcement issues and explain what the likely impacts on the insurance industry are from a liability perspective.

2:25 pm – 2:30 pm (AU)
4:25 pm – 4:30 pm (NZ)

Conference Wrap-Up & MC Close:

Adam Baker, *Executive Director – Broking, Willis Re*

2:25 pm – 2:30 pm (AU)
4:25 pm – 4:30 pm (NZ)

Conference Wrap-Up & MC Close:

Sophie Hudson, *Senior Associate, DLA Piper*

IN-PERSON NETWORKING DRINKS

ANZIIF will also host two complimentary networking functions to provide attendees with that much needed face-to-face interaction with their colleagues and peers.

SYDNEY

Further details to follow.

AUCKLAND

Date: Thursday 5 August

Time: 3:00pm – 5:00pm NZST

Venue: Coops Corner Pub, 204 Quay Street, Auckland, New Zealand